

■ Boring Bar Sleeves

Fig 1

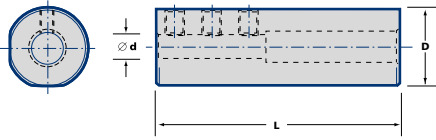
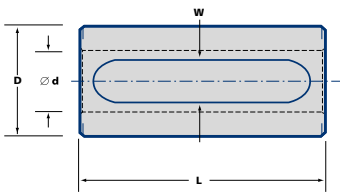


Fig 2



Ordering No.	Stock	Style	D	d	L	W
SS250-BS06-075	•	1	25	6	75	-
SS250-BS08-075	•	1	25	8	75	-
SS250-BS10-075	•	1	25	10	75	-
SS250-BS12-075	•	2	25	12	75	11
SS250-BS16-075	•	2	25	16	75	11
SS250-BS20-075	•	2	25	20	75	11
SS320-BS06-100	•	1	32	6	100	-
SS320-BS08-100	•	1	32	8	100	-
SS320-BS10-100	•	1	32	10	100	-
SS320-BS12-100	•	1	32	12	100	-
SS320-BS16-100	•	1	32	16	100	-
SS320-BS20-100	•	2	32	20	100	14
SS320-BS25-100	•	2	32	25	100	14
SS400-BS06-100	•	1	40	6	100	-
SS400-BS08-100	•	1	40	8	100	-
SS400-BS10-100	•	1	40	10	100	-
SS400-BS12-100	•	1	40	12	100	-
SS400-BS16-100	•	1	40	16	100	-
SS400-BS20-100	•	1	40	20	100	-
SS400-BS25-100	•	2	40	25	100	18
SS400-BS32-100	•	2	40	32	100	18

• = Standard Product - Normally Ex Stock
 ◦ = Standard Product - Availability on Request

Packing unit and ordering example: 1 piece SS250-BS06-075

Straight Shank

■ Boring Bar Sleeves cont'd

Fig 1

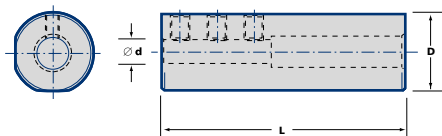
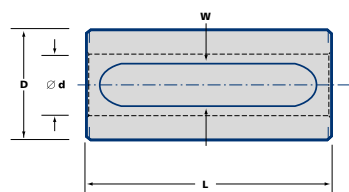


Fig 2



Ordering No.	Stock	Style	D	d	L	W
SS450-BS06-100	○	1	45	8	100	-
SS450-BS08-100	○	1	45	6	100	-
SS450-BS12-100	○	1	45	12	100	-
SS450-BS16-100	○	1	45	16	100	-
SS450-BS20-100	○	1	45	20	100	-
SS450-BS25-100	○	2	45	25	100	18
SS450-BS32-100	○	2	45	32	100	18
SS450-BS40-100	○	2	45	40	100	18
SS500-BS06-100	○	1	50	6	100	-
SS500-BS08-100	○	1	50	8	100	-
SS500-BS10-100	○	1	50	10	100	-
SS500-BS12-100	●	1	50	12	100	-
SS500-BS16-100	●	1	50	16	100	-
SS500-BS20-100	●	1	50	20	100	-
SS500-BS25-100	●	1	50	25	100	-
SS500-BS32-100	●	2	50	32	100	18
SS500-BS40-100	●	2	50	40	100	18
SS500-BS45-100	○	2	50	45	100	18

● = Standard Product - Normally Ex Stock
○ = Standard Product - Availability on Request

Packing unit and ordering example: 1 piece SS450-BS06-100