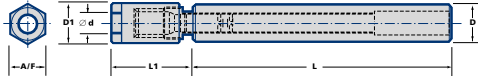






■ 'Slimline' Double Angle Tool Extensions



Ordering No.	Stock	Collets	Capacity d	D	D1	L1	L
SS080-DA000-132	•	000 DA	1-4	8	10.2	32	100
SS120-DA304-109	•	300 DA	1-6.5	12	14.3	33	76
SS120-DA304-173	•	300 DA	1-6.5	12	14.3	33	140
SS125-DA304-109	•	300 DA	1-6.5	12.5	14.3	33	76
SS125-DA304-173	•	300 DA	1-6.5	12.5	14.3	33	140
SS190-DA204-117	○	200 DA	1-10	19	21.5	41	76
SS190-DA204-181	•	200 DA	1-10	19	21.5	41	140
SS200-DA204-117	•	200 DA	1-10	20	21.5	41	76
SS200-DA204-181	•	200 DA	1-10	20	21.5	41	140
SS250-DA104-122	•	100 DA	2.5-14	25	27	46	76
SS250-DA104-186	•	100 DA	2.5-14	25	27	46	140
SS300-DA184-192	•	100 DA	3-20	30	36.6	51.5	140
SS300-DA184-255	•	180 DA	3-20	30	36.6	51.5	203

■ Spare Parts

Wrenches	Locknuts	Collets	Screws
 See page 130	 See page 138	 See page 121	 See page 138

• = Standard Product - Normally Ex Stock
○ = Standard Product - Availability on Request

Packing unit and ordering example: 1 piece SS080-DA000-132