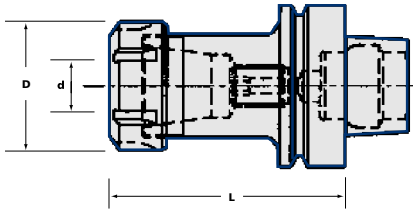


ER Collet Chucks



Taper	Ordering No.	Stock	Collets	Capacity d	L	D
50F	HSK50F-ER16-100	○	ER16	1-10	100	28
	HSK50F-ER20-070	○	ER20	1-13	70	34
	HSK50F-ER25-080	○	ER25	1-16	80	42
	HSK50F-ER32-100	○	ER32	2-20	100	50
63F	HSK63F-ER25-080	○	ER25	1-16	80	42
	HSK63F-ER32-090	○	ER32	2-20	90	50
	HSK63F-ER40-120	○	ER40	3-26	120	63

Spare Parts

Wrenches	Locknuts	Collets	Screws
See page 130	See page 136	See page 120	See page 138

End Mill/Sidelock Adaptors

Fig 1

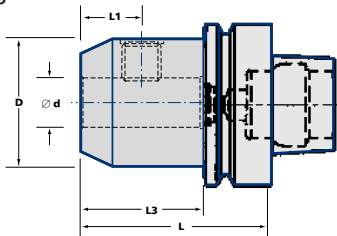
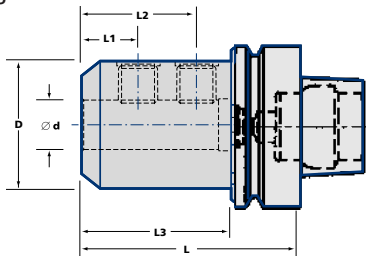


Fig 2



Taper	Ordering No.	Stock	fig	d	D	L	L1	L2	L3
63	HSK63F-EM06-065	○	1	6	25	65	18	-	36
	HSK63F-EM08-065	○	1	8	28	65	18	-	36
	HSK63F-EM10-065	○	1	10	35	65	20	-	40
	HSK63F-EM12-080	○	1	12	42	80	22.5	-	45
	HSK63F-EM14-080	○	1	14	44	80	22.5	-	45
	HSK63F-EM16-080	○	1	16	48	80	24	-	48
	HSK63F-EM18-080	○	1	18	50	80	24	-	48
	HSK63F-EM20-080	○	1	20	52	80	25	-	50
	HSK63F-EM25-110	○	2	25	65	110	24	49	56
	HSK63F-EM32-110	○	2	32	72	110	24	52	60

Balanced by Design

Spare Parts

Sidelock Screws			
See page 139			

• = Standard Product - Normally Ex Stock
 ○ = Standard Product - Availability on Request

Packing unit and ordering example: 1 piece HSK50F-ER16-100