

**Whistle Notch Adaptors**

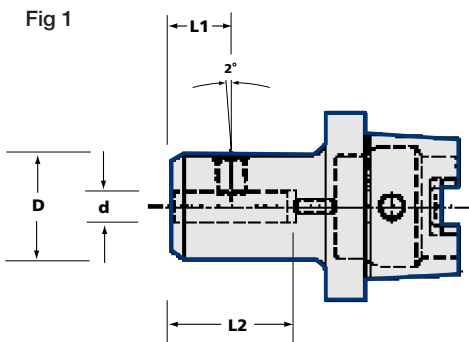


Fig 1

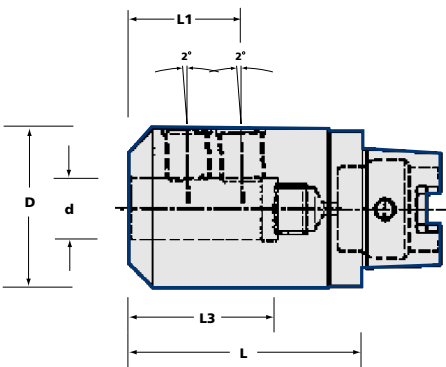


Fig 2

Taper	Ordering No.	Stock	fig	d	D	L	L1	L2	L3
<b>32</b>	HSK32C-WN06-060	•	1	6	25	60	18	-	36
	HSK32C-WN08-060	•	1	8	28	60	18	-	36
	HSK32C-WN10-065	•	1	10	35	65	20	-	40
<b>40</b>	HSK40C-WN06-060	•	1	6	25	60	18	-	36
	HSK40C-WN08-060	•	1	8	28	60	18	-	36
	HSK40C-WN10-065	•	1	10	35	65	20	-	40
	HSK40C-WN12-070	•	1	12	42	70	22.5	-	45
	HSK40C-WN14-070	•	1	14	44	70	22.5	-	45
	HSK40C-WN16-075	•	1	16	48	75	25	-	48
<b>50</b>	HSK50C-WN06-060	•	1	6	25	60	18	-	36
	HSK50C-WN08-060	•	1	8	28	60	18	-	36
	HSK50C-WN10-065	•	1	10	35	65	20	-	40
	HSK50C-WN12-075	•	1	12	42	75	22.5	-	45
	HSK50C-WN14-075	•	1	14	44	75	22.5	-	45
	HSK50C-WN16-080	•	1	16	48	80	24	-	48
	HSK50C-WN18-080	•	1	18	50	80	24	-	48
	HSK50C-WN20-080	•	1	20	52	80	25	-	50
<b>63</b>	HSK63C-WN06-060	•	1	6	25	60	18	-	36
	HSK63C-WN08-060	•	1	8	28	60	18	-	36
	HSK63C-WN10-065	•	1	10	35	65	20	-	40
	HSK63C-WN12-075	•	1	12	42	75	22.5	-	45
	HSK63C-WN14-075	•	1	14	44	75	22.5	-	45
	HSK63C-WN16-080	•	1	16	48	80	24	-	48
	HSK63C-WN18-080	•	1	18	50	80	24	-	48
	HSK63C-WN20-090	•	1	20	52	80	25	-	50
	HSK63C-WN25-095	•	2	25	65	95	24	49	56

**Spare Parts**

Sidelock Screws

Stopscrew



See page 139



See page 139

• = Standard Product - Normally Ex Stock  
 ○ = Standard Product - Availability on Request

Packing unit and ordering example: 1 piece HSK32C-WN06-060