

End Mill/Sidelock Holders

Fig 1

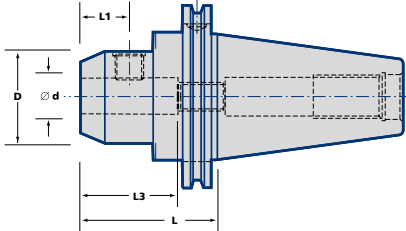
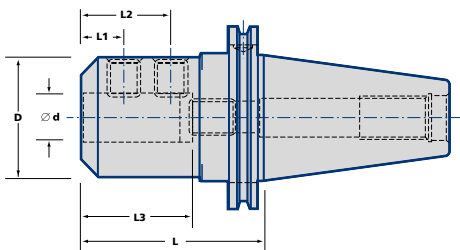


Fig 2



'B' form available
order example - CV40B-EM06-063

Balanced by Design

Taper	Ordering No.	Stock	Fig.	d	D	L	L1	L2	L3
40	CV40-EM06- 063	○	1	6	25	63	18	-	40
	CV40-EM08- 063	○	1	8	28	63	18	-	40
	CV40-EM10- 063	●	1	10	35	63	20	-	45
	CV40-EM12- 063	●	1	12	42	63	22,5	-	50
	CV40-EM16- 070	●	1	16	48	70	24	-	53
	CV40-EM20- 070	●	1	20	52	70	25	-	55
	CV40-EM25- 100	●	2	25	65	100	24	49	60
	CV40-EM32- 100	●	2	32	72	100	24	52	64
50	CV50-EM10- 063	●	1	10	35	63	20	-	45
	CV50-EM12- 063	●	1	12	42	63	22,5	-	50
	CV50-EM14- 063	○	1	14	44	63	22.5	-	50
	CV50-EM16- 070	●	1	16	48	70	24	-	53
	CV50-EM18- 070	○	1	18	50	70	24	-	53
	CV50-EM20- 070	●	1	20	52	70	25	-	55
	CV50-EM25- 100	●	2	25	65	100	24	49	60
	CV50-EM32- 100	●	2	32	72	100	24	52	64
	CV50-EM40- 110	●	2	40	90	110	30	62	74
	CV50-EM50- 120	●	2	50	100	120	35	70	84

Spare Parts	Sidelock Screws	Stopscrew		
	See page 139	See page 139		

CV range available with imperial tapping sizes. Please call for availability.

● = Standard Product - Normally Ex Stock
○ = Standard Product - Availability on Request

Packing unit and ordering example: 1 piece CV40-EM06-063