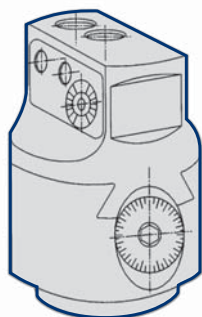
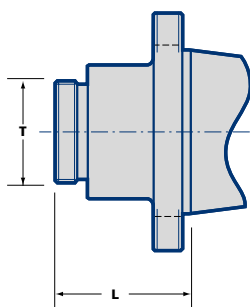


## ■ Boring Heads



Ordering No.	Stock	D	L	Bar Ø A & B	Bar Ø C	Bar Distance Off Centre	Total Offset	Mounting Thread
BH - 050	•	50	60	12	12,7	15,75	16	7/8" X 20
BH - 076	◦	76	80	20	19,05	23,75	19	1 1/2" X 18
BH - 101	◦	101	95	25	25,4	31,5	35	1 1/2" X 18

## ■ Boring Head Adaptors



Ordering No.		Taper	Stock	T	L
BT40-CBI 0875-033	<b>BT MAS 403</b>	<b>40</b>	•	7/8" X 20	033
BT40-CBI 1500-035			•	1 1/2" X 18	035
BT50-CBI 0875-045		<b>50</b>	•	7/8" X 20	045
BT50-CBI 1500-045			•	1 1/2" X 18	045
DV40-CBI 0875-040	<b>DIN 69871-A</b>	<b>40</b>	•	7/8" X 20	040
DV40-CBI 1500-035			•	1 1/2" X 18	035
DV50-CBI 0875-050		<b>50</b>	•	7/8" X 20	050
DV50-CBI 1500-050			•	1 1/2" X 18	050
QC30-CBI 0875-021	<b>ISO QUICK CHANGE</b>	<b>30</b>	•	7/8" X 20	021
QC30-CBI 1500-028			•	1 1/2" X 18	028
QC40-CBI 0875-028		<b>40</b>	•	7/8" X 20	028
QC40-CBI 1500-023			•	1 1/2" X 18	023
DT50-CBI 0875-045	<b>ISO DIN 2080</b>	<b>50</b>	◦	7/8" X 20	045
DT50-CBI 1500-045			◦	1 1/2" X 18	045
R8-CBI 0875-015	<b>R8</b>		•	7/8" X 20	015
EC-CBI 0875-015	<b>EASYCHANGE</b>		•	7/8" X 20	015
HSK63A-CBI0875-042	<b>DIN 69893-AC</b>	<b>63A</b>	•	7/8" X 20	42
HSK63A-CBI1500-042			•	1 1/2" X 18	42

• = Standard Product - Normally Ex Stock  
◦ = Standard Product - Availability on Request

Packing Unit and Ordering Example BH-050