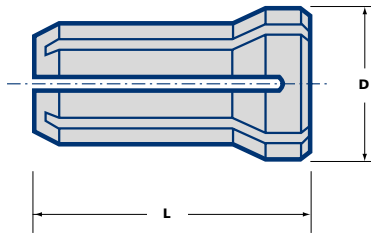


## DA Double Angle Collets



### Set Collets

- SET-000D-010-040-0 1-4mm in 0.25mm increments
- SET-100D-025-140-0 2.5-14mm in 0.5mm increments
- SET-180D-030-200-0 3-20mm in 0.5mm increments
- SET-200D-010-100-0 1-10mm in 0.5mm increments
- SET-300D-010-065-0 1-6.5mm in 0.5mm increments

Imperial bore sizes available

Ordering No.	Stock	Range d	Increments	D	L
000DA-***	•	1.0-1.75	0.25	6,5	16.3
000DA-***	•	2.0-2.25	0.25	6,5	16.3
000DA-***	•	2.50-2.75	0.25	6,5	16.3
000DA-***	•	3.0-4.0	0.25	6,5	16.3
300DA-***	•	1.0-1.5	0.5	9,4	25.4
300DA-***	•	2.0	-	9,4	25.4
300DA-***	•	2.5	-	9,4	25.4
300DA-***	•	3.0-6.5	0.5	9,4	25.4
200DA-***	•	1.0-1.5	0.5	13,4	30.3
200DA-***	•	2.0	-	13,4	30.3
200DA-***	•	2.5	-	13,4	30.3
200DA-***	•	3.0-10.0	0.5	13,4	30.3
100DA-***	•	1.0-1.5	0.5	19,5	36.7
100DA-***	•	2.0-3.0	0.5	19,5	36.7
100DA-***	•	3.5-5.5	0.5	19,5	36.7
100DA-***	•	6.0-14.0	0.5	19,5	36.7
180DA-***	•	2.0-2.5	0.5	26	41.6
180DA-***	•	3.0-5.5	0.5	26	41.6
180DA-***	•	6.0-20.0	0.5	26	41.6
400DA-***	•	6.0-9.5	0.5	37	51.0
400DA-***	•	10.0-25.5	0.5	37	51.0

Substitute \*\*\* for Bore size required.  
(ie. 6mm = 200DA-060)