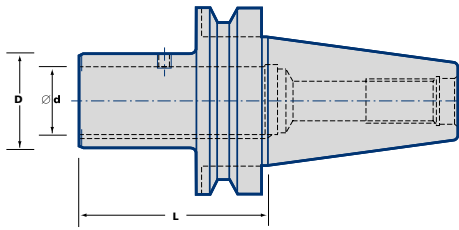


Automotive Shank Adaptors



| Taper | Ordering No. | Stock | d | L | D |
|-------|---------------|-------|----|-----|----|
| 40 | BT40-AS28-070 | • | 28 | 70 | 40 |
| | BT50-AS28-100 | • | 28 | 100 | 40 |
| 50 | BT50-AS36-100 | • | 36 | 100 | 50 |

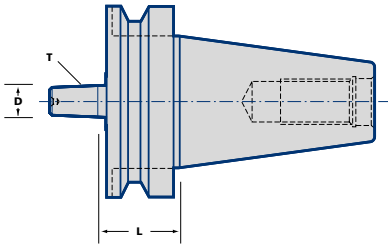
Spare Parts

Sidelock Screws



See page 139

Jacobs/DIN in 238 Chuck Adaptors



| Taper | Ordering No. | Stock | d | D | L |
|-------|----------------|-------|------|------|----|
| 30 | BT30-DTB12-025 | ○ | B12 | 12 | 25 |
| | BT30-JT6-025 | ○ | J6 | 17,2 | 25 |
| | BT30-JT33-030 | ○ | JT33 | 15,9 | 30 |
| 40 | BT40-DTB16-039 | • | B16 | 16 | 39 |
| | BT40-JT6-039 | • | J6 | 17,2 | 39 |
| | BT40-JT33-045 | • | J33 | 15,9 | 45 |
| 50 | BT50-DTB16-041 | ○ | B16 | 16 | 41 |
| | BT50-JT6-042 | • | J6 | 17,2 | 42 |
| | BT50-JT33-041 | • | J33 | 15,9 | 41 |

Balanced by Design

• = Standard Product - Normally Ex Stock
 ○ = Standard Product - Availability on Request

Packing unit and ordering example: 1 piece BT40-AS28-070