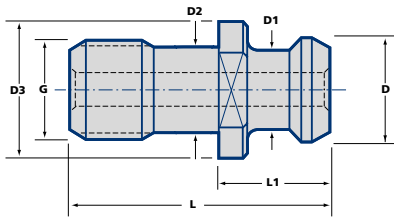
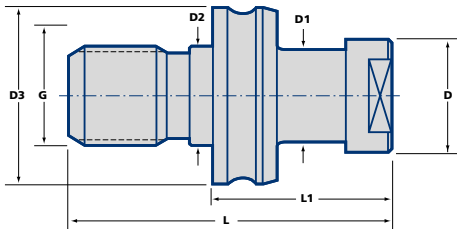


## ■ CAT/ANSI Pull Studs



Taper	Ordering No.	Stock	L	L1	D	D1	D2	D3	G
30	RK30- CV- 1M	○	28	11,7	13,2	9,8	9,8	16,5	M12
40	RK40- CV- 1M	●	38,1	16,3	18,8	12,4	12,4	23,5	M16
	RK40- CV- 3M	●	41,2	16,2	18,7	12,4	17	22	M16
45	RK45- CV- 1M	○	46	20,8	23,9	15,4	15,4	29,4	M20
50	RK50- CV- 1M	●	58,4	25,4	29,0	20,8	20,8	35,6	M24
	RK50- CV- 3M	●	65,4	25,4	29,0	20,8	25	36,5	M24

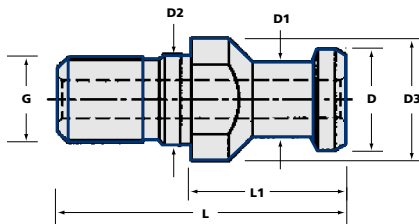
## ■ CAT/ANSI Pull Studs



Taper	Ordering No.	Stock	L	L1	D	D1	D2	D3	G
40	RK40- CV- 2M	○	51,8	26,8	15	10	17	21,5	M12
45	RK45- CV- 2M	○	70,2	40,2	19	14	21	31	M20
50	RK50- CV- 2M	○	85,2	45,2	23	17	25	38	M24

## ■ BT/DV Pull Studs

### BT40 Toolholder into a DV40 Spindle



Taper	Ordering No.	Stock	L	L1	D	D1	D2	D3	G
40	RK40-BT/DV29	●	54	29	19	14	17	23	M16

## ■ Special Pull Studs

Please contact us with your requirements, we have a large selection of special pull studs.

● = Standard Product - Normally Ex Stock  
○ = Standard Product - Availability on Request

Packing unit and ordering example: 1 piece RK30-CV-1M