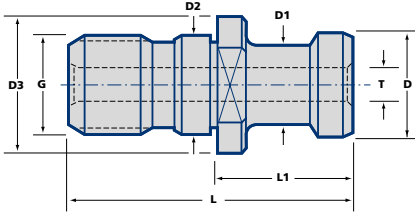


Pull Studs

ISO 7388/2 Pull Studs

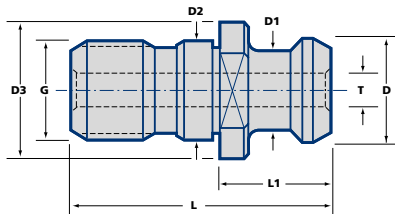
Type A



Taper	Ordering No.	Stock	Type	L	L1	D	D1	D2	D3	T	G
40	RK40-ISA	○	A	54	26	19	14	17	23	7,5	M16
45	RK45-ISA	○	A	65	30	23	17	21	30	9,5	M20
50	RK50-ISA	●	A	74	34	28	21	25	36	11,5	M24

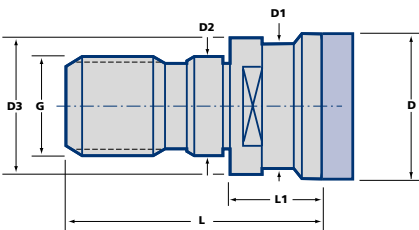
ISO 7388/2 Pull Studs

Type B



Taper	Ordering No.	Stock	Type	L	L1	D	D1	D2	D3	T	G
40	RK40-ISB	●	B	44,5	16,4	18,9	12,9	17	22,5	7,5	M16
45	RK45-ISB	○	B	56	20,9	24	16,3	21	30	9,5	M20
50	RK50-ISB	●	B	65,5	25,5	29	19,6	25	36	11,5	M24

OTT/DIN Pull Studs



Taper	Ordering No.	Stock	L	L1	D	D1	D2	G
40	RK40- OTT	●	55	25	25	21,1	17	M16

● = Standard Product - Normally Ex Stock
○ = Standard Product - Availability on Request

Packing unit and ordering example: 1 piece RK40-1SA