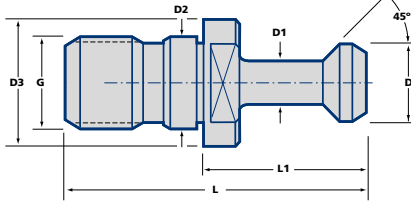
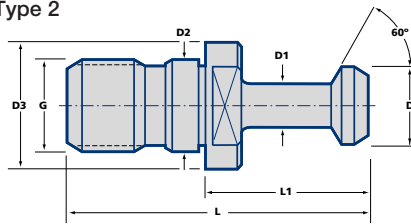


## MAS403 Pull Studs

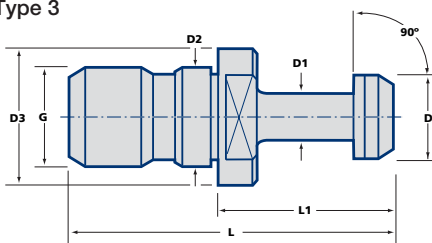
Type 1



Type 2



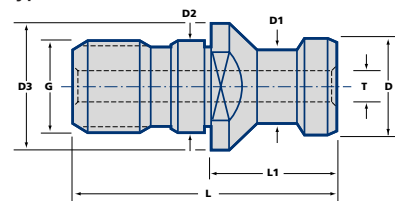
Type 3



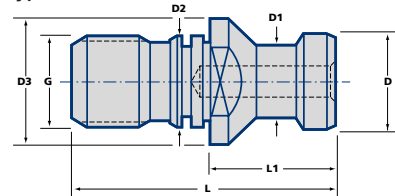
Taper	Ordering No.	Stock	Type	$\infty^\circ$	L	L1	D	D1	D2	D3	T	G
30	RK30-BT-1	•	1	45	43	23	11	7	12,5	16,5	-	M12
	RK30-BT-2	•	2	60	43	23	11	7	12,5	16,5	-	M12
40	RK40-BT-1	•	1	45	60	35	15	10	17	23	-	M16
	RK40-BT-2	•	2	60	60	35	15	10	17	23	-	M16
	RK40-BT-3	•	3	90	60	35	15	10	17	23	-	M16
50	RK50-BT-1	•	1	45	85	45	23	17	25	38	-	M24
	RK50-BT-2	•	2	60	85	45	23	17	25	38	-	M24
	RK50-BT-3	•	3	90	85	45	23	17	25	38	-	M24

## DIN-69872 Pull Studs

Type A



Type B



Taper	Ordering No.	Stock	Type	L	L1	D	D1	D2	D3	T	G
30	RK30-DV	•	A	44	24	13	9	13	17	-	M12
	RK30-DVB	•	B	44	24	13	9	13	17	-	M12
40	RK40-DV	•	A	54	26	19	14	17	23	7,5	M16
	RK40-DVB	•	B	54	26	19	14	17	23	-	M16
45	RK45-DV	○	A	65	30	23	17	21	30	9,5	M20
	RK45-DVB	○	B	65	30	23	17	21	30	-	M20
50	RK50-DV	•	A	74	34	28	21	25	36	11,5	M24
	RK50-DVB	•	B	74	34	28	21	25	36	-	M24

• = Standard Product - Normally Ex Stock  
○ = Standard Product - Availability on Request

Packing unit and ordering example: 1 piece RK30-BT-1