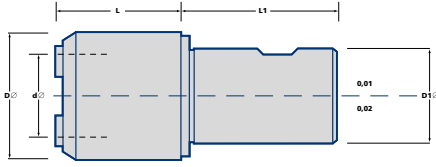


## Quick Change Adaptor Style : Fixed Type Tapping Head



Ordering No.	Stock	Tap Range	DØ	D1Ø	dØ	L	L1
SS200-STB0-077	○	M1-M8	25.5	20.0	13	37	40
SS200-STB1-079	○	M4-M14	36.0	20.0	19	39	40
SS250-STB1-079	●	M4-M14	36.0	25.0	19	39	40
SS250-STB2-105	○	M7-M24	53.0	25.0	31	65	40

## Ancillaries

Tap Adaptors



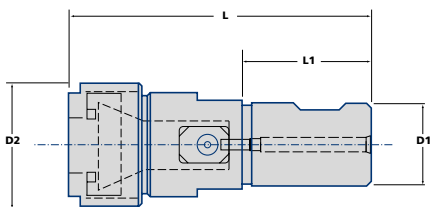
See page  
124-128

Tap Extensions



See page  
132

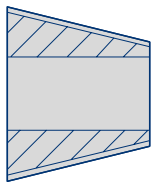
## Rubberflex Collet System - Rigid Tap Adaptors



Ordering No.	Stock	Tap Range	D1Ø	D2Ø	L	L1
SS250-RX12-086	○	M3-M12	25	28	86	40
SS250-RX20-094	○	M5-M20	25	38	94	40

N.B. Drive Clamp Set supplied as part of the assembly.

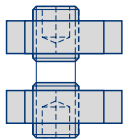
## Rubberflex Collets



See page 122 for ordering details.

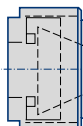
Tool No.	New Collet No.	Previous Collet No.	Shank Range
SS250-RX12-086	STS-00CT421	(J421)	3.5-6.5
	STS-00CT422	(J422)	6.5-10.0
SS250-RX20-094	STS-00CT441	(J441)	4.5-10.0
	STS-02CT03	(J440)	7-14

## Drive Clamp Set



Ordering No.	Stock	
RX12-C/SET	●	
RX20-C/SET	●	

## Locknut



Tool No.	Stock	
LNA-TSM12	○	
LNA-TSM20	○	

● = Standard Product - Normally Ex Stock  
○ = Standard Product - Availability on Request

Packing unit and ordering example: 1 piece SS200-STB0-077